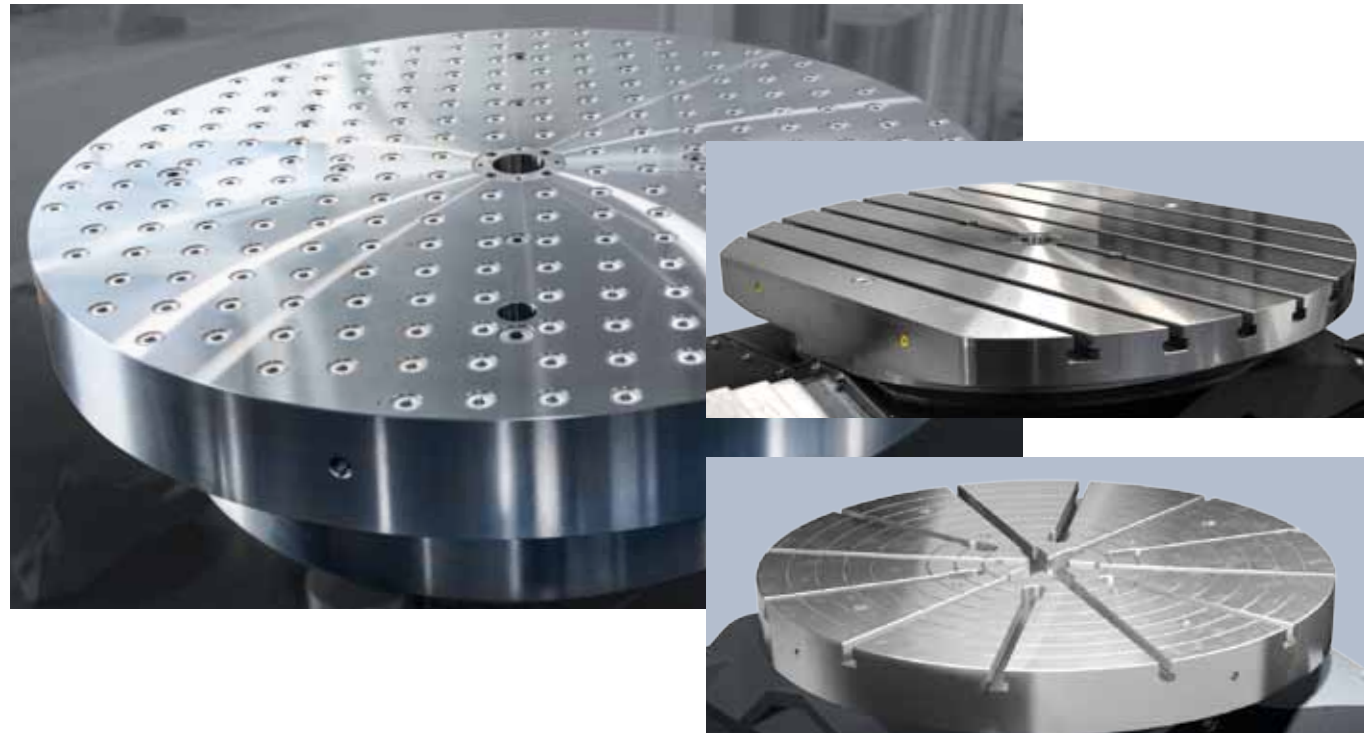


Options

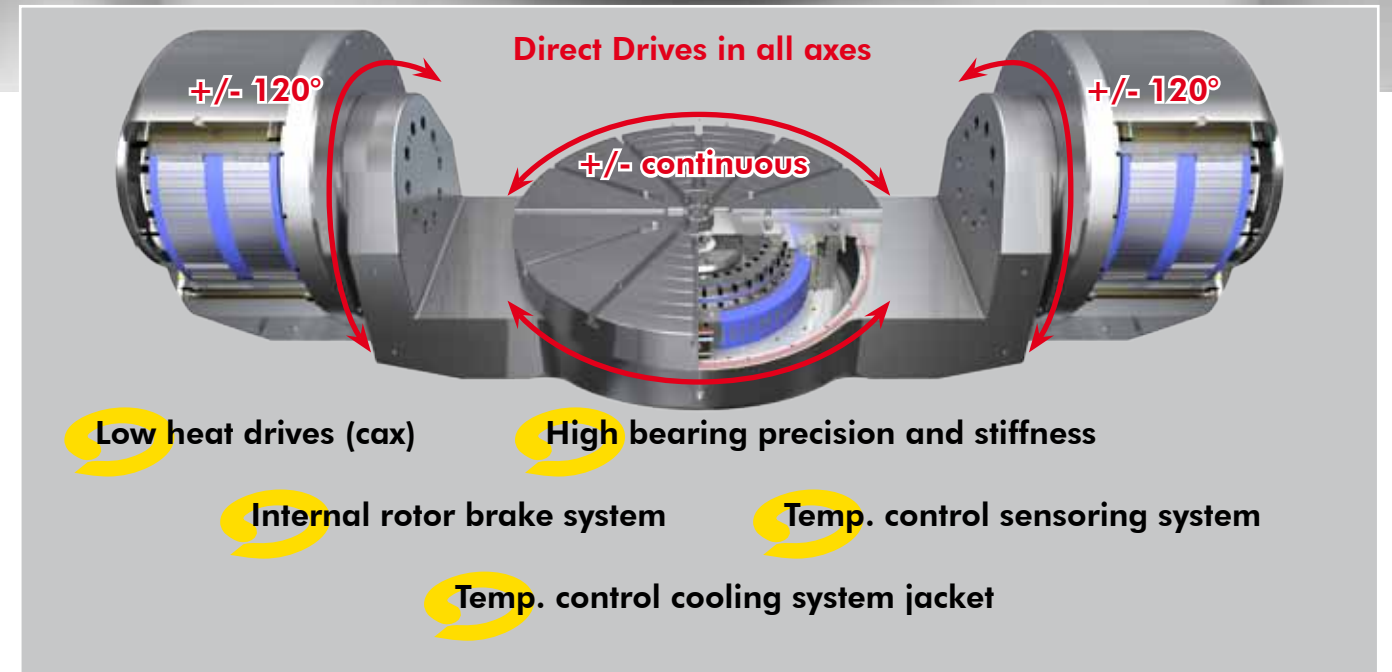
- Pneumatic zero-point clamping system for quick exchange of workpieces, devices or pallets
- different face plates for almost every application area



flyer_highspeed_table_2015 • Edition 09/2015 All data for information purpose only • Errors excepted • Technical data subject to change in terms of technical development

CyTec Trunnion Tables

Up to 1200 rpm!



CyTec Zylindertechnik GmbH
 Steffensrott 1 • D-52428 Jülich • Tel.: (+49) 2461/6808-0 • Fax: (+49) 2461/6808-758
 E-mail: info@cytec.de • http:// www.cytec.de
 Edition 09/2015



CyTec Zylindertechnik GmbH
 Steffensrott 1 • D-52428 Jülich • Tel.: (+49) 2461/6808-0 • Fax: (+49) 2461/6808-758
 E-mail: info@cytec.de • http:// www.cytec.de
 Edition 09/2015



Rotary tilt table CRT/400/HV-P

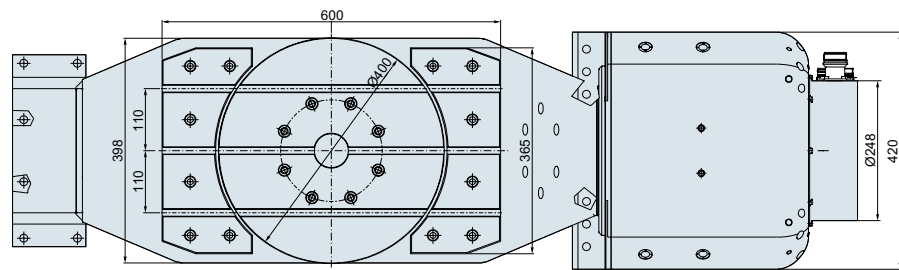
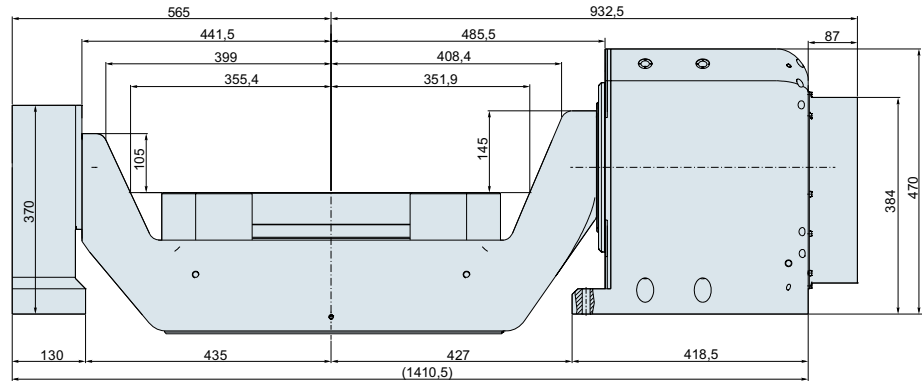
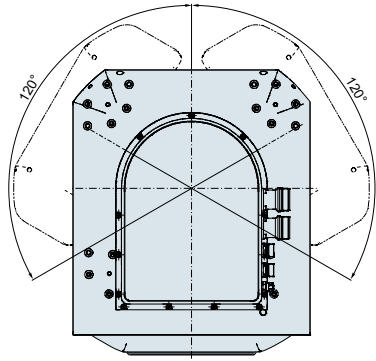
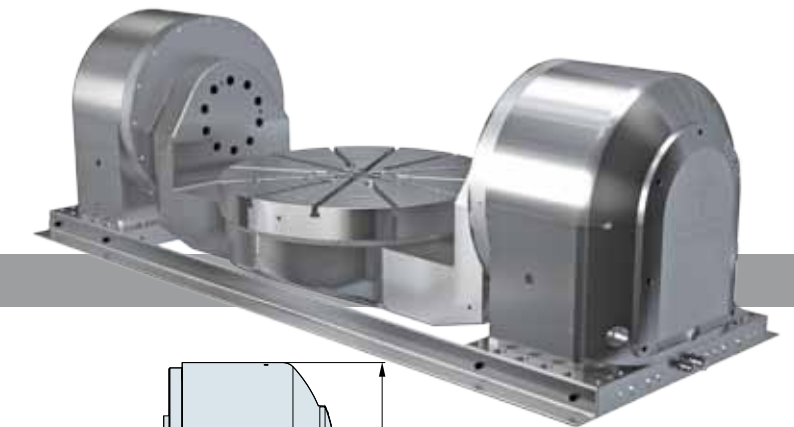


Table 1		Rotary axis		Swivel axis
Table diameter:		400 mm		-
Load weight max.:		500 kg		-
Planar runout:		0,01 mm		0,01 mm
Swivel range:		continuous		±120°
Spring operated clamping system	Clamping torque:	1000 Nm		2000 Nm
	Nom. pneumatic release pressure:	6 bar		3 bar
	Max. pneumatic release pressure:	10 bar		6 bar
Angular measuring system	Initial signal:	1 Vss sin/cos		1 Vss sin/cos
	Type:	absolute		absolute
	Positioning accuracy:	± 5"		± 2"
Motor	Type:	RMZ 240-75		RMZ 310-175
	Version:	"HighTorque"	"HighSpeed"	-
	Rated torque:	330 Nm	220 Nm	2.100 Nm
	Peak torque:	750 Nm	550 Nm	1.240 Nm
	Rated speed:	250 r.p.m.*	600 r.p.m.*	60 r.p.m.
	Speed max.:	500 r.p.m.**	1200 r.p.m.**	60 r.p.m.
	Number of pole pairs:	25		20
	Rated current:	15/30 A		24 A
	Nominal voltage:	400 V		400 V
	Weight approx.:		1600 kg	

*duty cycle 100% **duty cycle 10%



Rotary tilt table CRT/660/800/HV

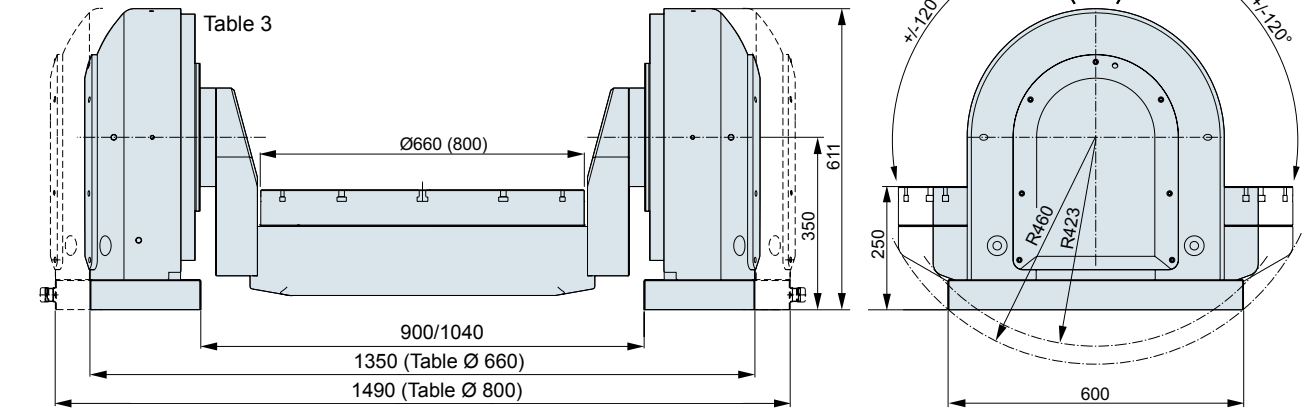
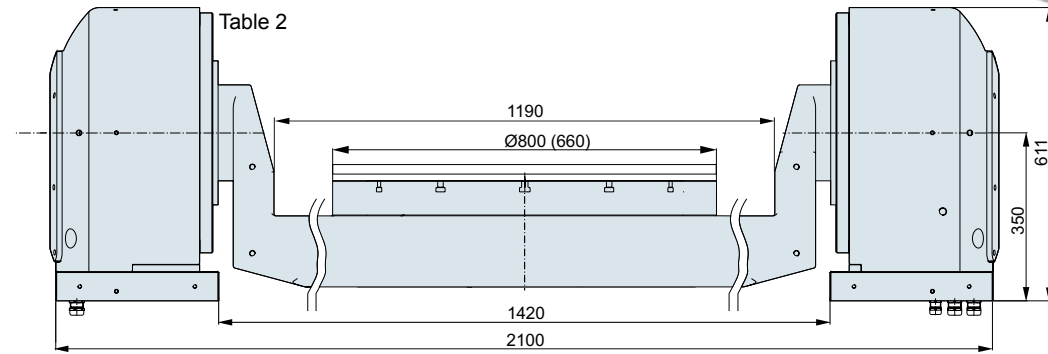


		Table 2		Table 3			
		Rotary axis		Swivel axis	Rotary axis		Swivel axis
Table diameter:		800 (660) mm		-	660 (800) mm		-
Load weight max.:		2000 (1000) kg		-	1.000 kg		-
Planar runout:		0,01 mm		0,01 mm	0,01 mm		0,01 mm
Swivel range:		continuously		±120°	continuously		±120°
Clamping	Clamping torque:	4000 Nm		10000 Nm	3700 Nm		6000 Nm
	Nominal pressure:	60 bar		60 bar	50 bar		50 bar
Angular measuring system	Initial signal:	1 Vss sin/cos		1 Vss sin/cos	1 Vss sin/cos		1 Vss sin/cos
	Type:	absolute		absolute	absolute		absolute
	Positioning accuracy:	± 5" (± 2,5")		± 5" (± 2,5")	± 5" (± 2,5")		± 5" (± 2,5")
Motor	Type:	RMZ 564-50		RMZ 410-175 (2x)	RMZ 564-50		RMZ 410-75 (2x)
	Version:	"HighTorque"	"HighSpeed"	-	"HighTorque"		"HighSpeed"
	Rated torque:	1000 Nm	750 Nm	3900 Nm	1000 Nm	750 Nm	1500 Nm
	Peak torque:	2000 Nm	1500 Nm	5000 Nm	2000 Nm	1500 Nm	3700 Nm
	Rated speed:	200 r.p.m.*	650 r.p.m.*	30 r.p.m.	200 r.p.m.*	650 r.p.m.*	45 r.p.m.
	Speed max.:	300 r.p.m.**	800 r.p.m.**	-	300 r.p.m.**	800 r.p.m.**	-
	Number of pole pairs:	30		80	30		80
	Rated current:	15/30 A		60 A	15/30 A		30 A
	Nominal voltage:	400 V		400 V	400 V		400 V
	Weight approx.:		2200/1950 kg			1370/1600 kg	

*duty cycle 100% **duty cycle 10%